

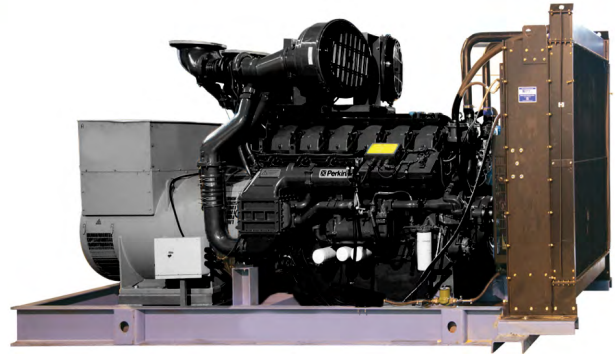


Diesel Generator

keep your power on



10Kva-72Kva Group

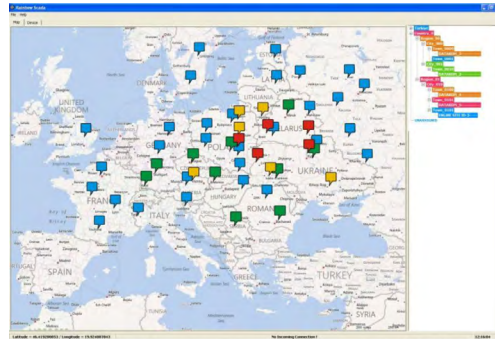
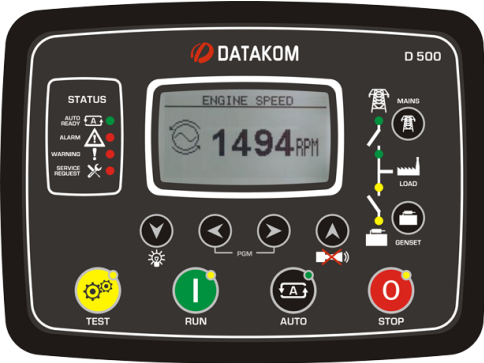


| Modal | | ASP 10 | ASP 15 | ASP 16 | ASP22 | ASP 33 | ASP 50 | ASP 66 | ASP 72 |
|---|---------|--------------------------|-----------|-----------|----------|----------|------------|-------------|-------------|
| Power ESP قوة | kWe/kVA | 8/10 | 11,6/15 | 13/16 | 17,7/22 | 26,4/33 | 39,7/50 | 52,8/66 | 58/72 |
| Power PRP قوة | kWe/kVA | 7,2/9 | 10,4/13 | 11/14 | 16/20 | 24/30 | 36/45 | 48/60 | 52/65 |
| Power Factor معامل القدرة | cos φ | 0.8 | 0.8 | 0.8 | 0.8 | 0.8 | 0.8 | 0.8 | 0.8 |
| DIESEL ENGINE (4 STROKE - WATER COOLED) | | | | | | | | | |
| Brand الماركة | | | | | | | | | |
| PERKINS | | | | | | | | | |
| Model الموديل | | 403A-11G1 | 403A-15G1 | 403A-15G2 | 404-22G1 | 113A-33G | 103A-33TG1 | 1103A-33TG2 | 1104A-44TG1 |
| Engine Power قوة المحرك | kWm | 9.5 | 13.5 | 15 | 20.6 | 31 | 46.5 | 60.5 | 65.6 |
| Number of Cylinders عدد الاسطوانات | | 3L | 3L | 3L | 4L | 3L | 3L | 3L | 4L |
| Total Cylinder Capacity اجمالي قدرة الاسطوانات | lt | 1.131 | 1.496 | 1.496 | 2.216 | 3.3 | 3.3 | 3.3 | 4.4 |
| Bore X Stroke الضرية X التحمل | mm | 77X81 | 84X90 | 84X90 | 84X100 | 105X127 | 105X127 | 105X127 | 105X127 |
| Compression Ratio نسبة الضغط | | 23:01 | 22,5:1 | 22,5:1 | 23,3:1 | 19,25:1 | 17,25:1 | 17,25:1 | 17,25:1 |
| Air Intake System نظام سحب الهواء* | | NA | NA | NA | NA | NA | TC | TC | TC |
| Governor Type نوع التحكم | | Mechanic | Mechanic | Mechanic | Mechanic | Mechanic | Mechanic | Mechanic | Mechanic |
| Electrical System النظام الكهربائي | VDC | 12 | 12 | 12 | 12 | 12 | 12 | 12 | 12 |
| Lubricating Oil Capacity سعة زيت التشحيم | lt | 4.9 | 6 | 6 | 10.6 | 7.9 | 7.9 | 7.9 | 8 |
| Cooling Water Capacity سعة مياه التبريد | lt | 5.2 | 6 | 6 | 7 | 10.2 | 10.2 | 10.2 | 13 |
| Fuel consumption استهلاك الوقود | | | | | | | | | |
| % 100 PRP | g/kWh | 248 | 248 | 250 | 237 | 212 | 211 | 218 | 208 |
| AC ALTERNATOR مولد التيار المتردد | | | | | | | | | |
| Phase / Number of Poles الطور / عدد الاقطاب | | 3 / 4 | | | | | | | |
| Warning System نظام إنذار | | Self-warning / Brushless | | | | | | | |
| Voltage Regulator منظم / ضابط / الفلطية | | A.V.R (Electronic) | | | | | | | |
| Voltage Regulation تنظيم الجهد | | ±%1 | | | | | | | |
| Isolation عزل | | H class | | | | | | | |
| Protection حماية | | IP23 | | | | | | | |
| Connection style نمط التوصيل | | Star | | | | | | | |
| Number of Steps عدد الخطوات | | 2 / 3 | | | | | | | |
| Dimensions الأبعاد | | | | | | | | | |
| Cabinet Dimensions الأبعاد مع كاتم الصوت | | | | | | | | | |
| Width العرض | mm | 850 | 850 | 850 | 850 | 900 | 900 | 900 | 900 |
| Length الطول | mm | 1000 | 1300 | 1300 | 1300 | 1600 | 1600 | 1800 | 1800 |
| High الارتفاع | mm | 1100 | 1100 | 1100 | 1260 | 1380 | 1380 | 1380 | 1380 |
| Weight (dry) الوزن (الجاف) | kg | 443 | 410 | 410 | 600 | 800 | 861 | 940 | 1070 |
| Fuel Tank Capacity سعة خزان الوقود | lt | 46.2 | 54.6 | 54.6 | 54.6 | 107.8 | 107.8 | 145 | 145 |
| Dimensions without Cabinet الأبعاد من دون كاتم الصوت | | | | | | | | | |
| Width العرض | mm | 850 | 950 | 950 | 950 | 1000 | 1000 | 1100 | 1100 |
| Length الطول | mm | 1750 | 1950 | 1950 | 1950 | 2400 | 2400 | 2650 | 2650 |
| High الارتفاع | mm | 1380 | 1380 | 1380 | 1380 | 1530 | 1530 | 1680 | 1680 |
| Weight (dry) الوزن (الجاف) | kg | 630 | 600 | 600 | 858 | 1050 | 1148 | 1220 | 1400 |
| Fuel Tank Capacity سعة خزان الوقود | lt | 46.2 | 54.6 | 54.6 | 54.6 | 107.8 | 107.8 | 145 | 145 |



Diesel Generator
keep your power on

WEB BASED D-500LITE



Fleet Display on Map, online monitoring



Smartphone Support

GSM-SMS



E-MAIL



GEO
LOCATION



CENTRAL
MONITORING



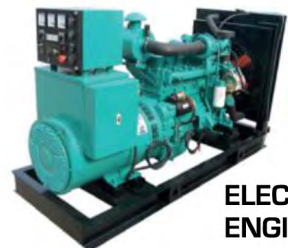
PC



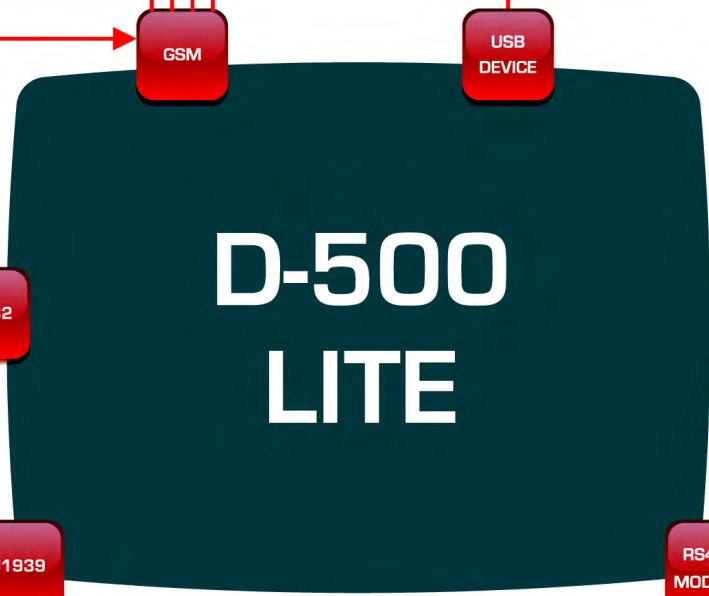
EXTERNAL
MODEM



GPS
MODULE



ELECTRONIC
ENGINE



GSM

USB
DEVICE

RS232

J1939

RS485
MODBUS

HMI
DISPLAY



PLC



REMOTE
DISPLAY

